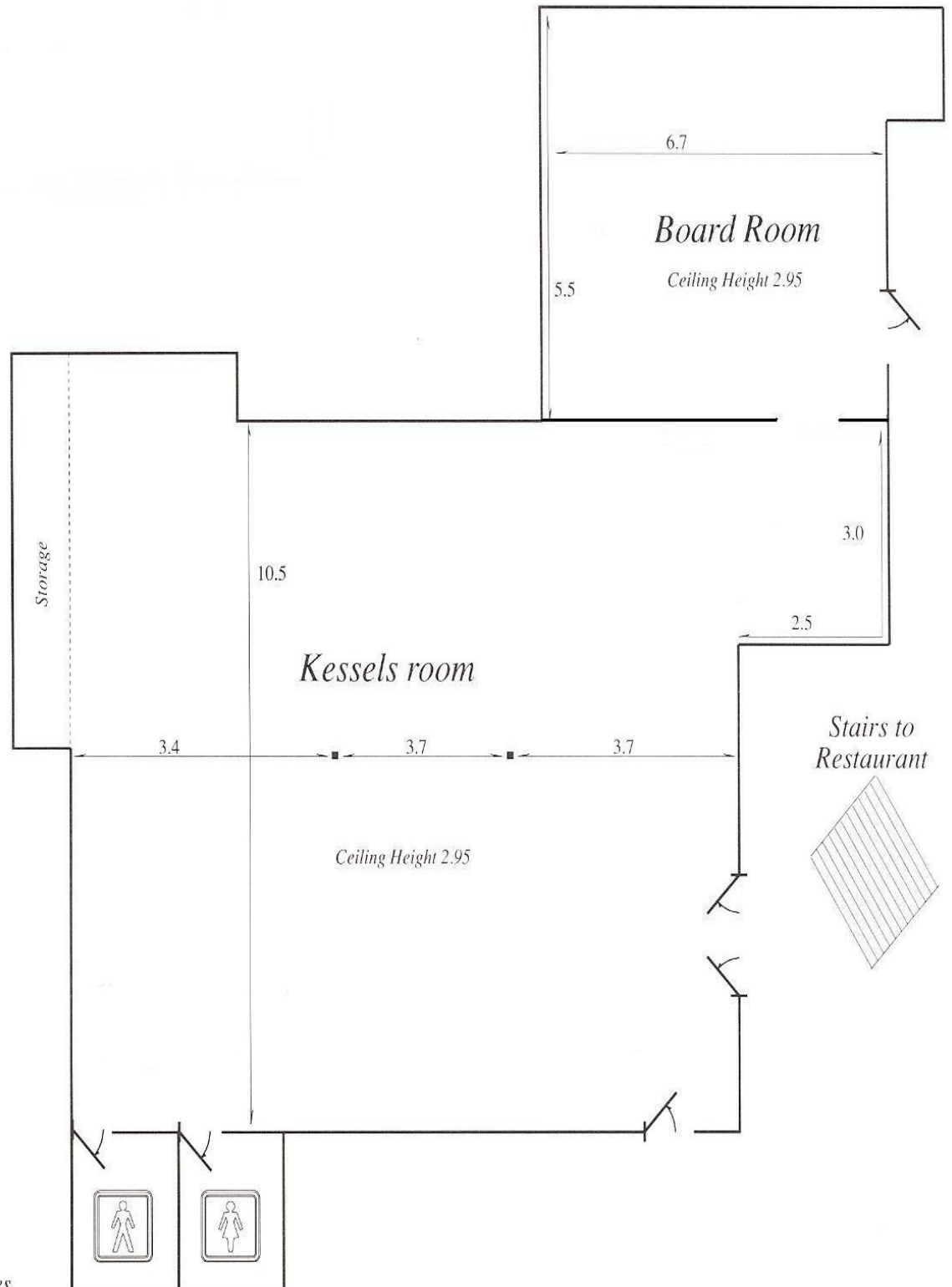


Floor Plan 1

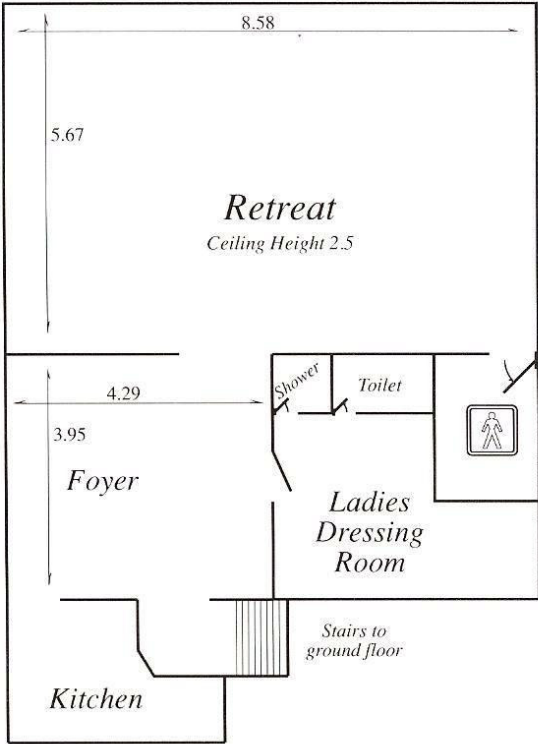


Kessels Room & Board Room down stairs from the Restaurant.

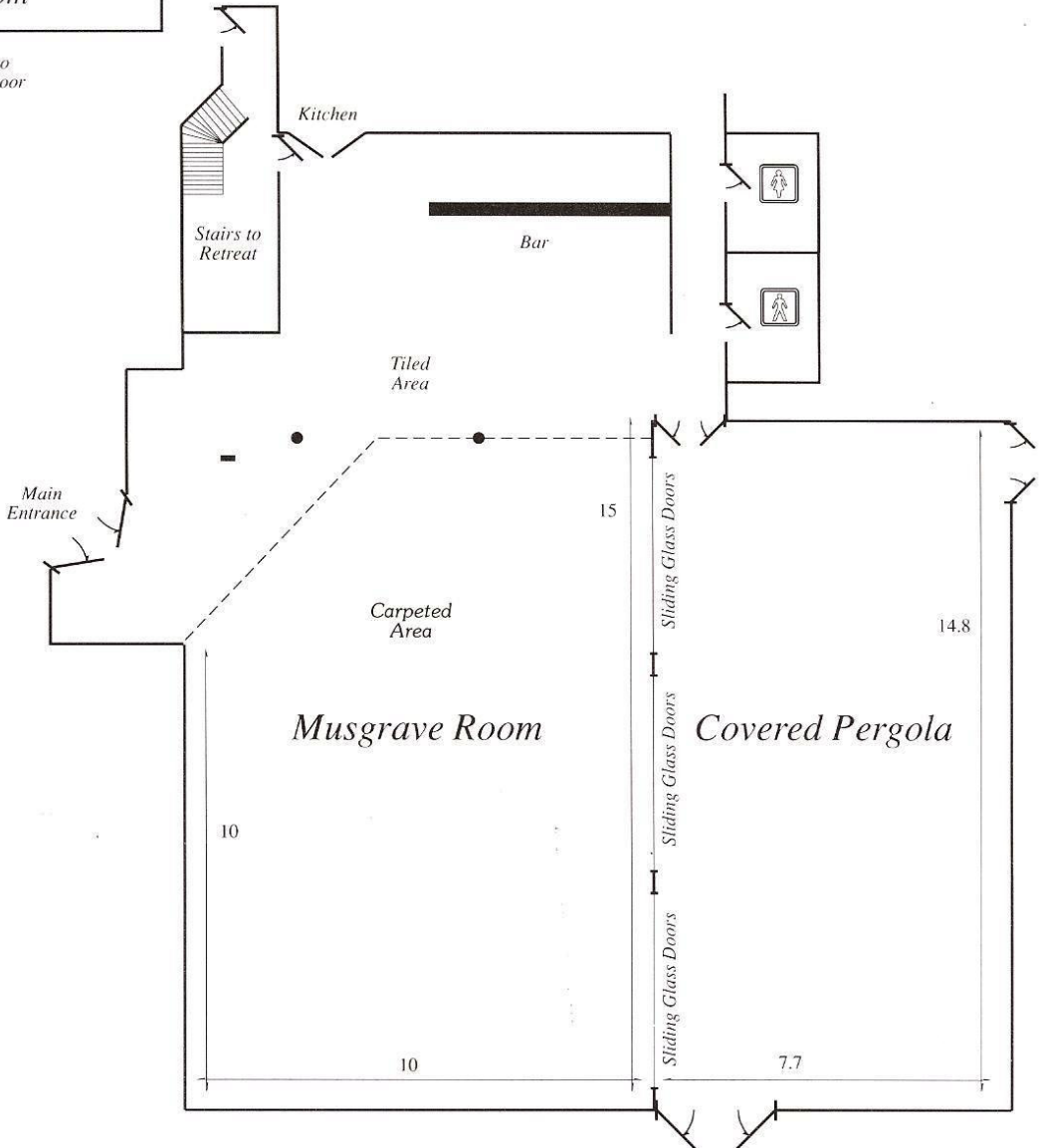
The Boardroom has an outside undercover Pergola.

The Kessels Room has its own private facilities with a meet n greet area outside the door. It is also flexible to include break out areas.

Floor Plan 2



The Conference Centre in the middle of the property is opposite the 4,000sq m Trade Fair Field.



- Retreat : 48.65m²
- Foyer : 16.95m²
- Musgrave Room : 167m²
- Pergola : 114m²

All measurements are in metres